

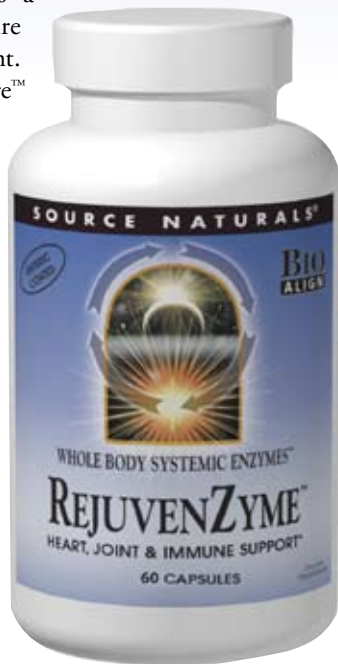
# REJUVENZYME™

*Not Just for Digestion Anymore*

Most people are familiar with the role digestive enzymes play in breaking down food into nutrients for absorption into the bloodstream. In recent years, however, we have learned through scientific research that systemic enzymes are necessary for our very survival. It is now understood that enzymes not only help digest and assimilate nutrients, they also empower metabolic functions for the entire body. Enzymes are not just for digestion anymore! They perform an astronomical number of vital metabolic reactions, which occur every second of our lives.

Although we have been graced by modern miracles in the name of convenience, numerous environmental hazards have resulted, and toxins have been generated in our water supply and food sources. Stress, unhealthy diet, and questionable lifestyle choices can throw the body's immune system into imbalance, unleash a flood of bio-chemical reactions, and set the stage for metabolic inflammation and long-term health concerns. The proteolytic enzymes in REJUVENZYME™ work on a deep systemic level to support healthy inflammation response by restoring balance to multiple metabolic actions within the body.

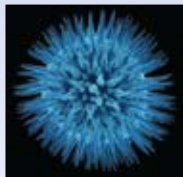
Source Naturals REJUVENZYME is a balanced approach to keeping entire body systems in healthy alignment. Source Naturals employs SystemiCare™ as a holistic approach to personal health care. REJUVENZYME supports five of the dozen deep metabolic systems identified in the SystemiCare model as critical to today's health. These five systems are: Inflammation Response, Circulation, Structure/Mobility, Immunity, and Antioxidant Defense. Without enzymes, we cannot live, and without enough of the right type of enzymes, our health and well-being may be compromised.



**Tissue Repair**



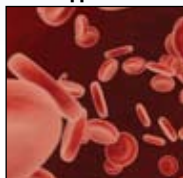
**Metabolic Inflammation**



**Immune Support**



**Joint Support**



**Cellular Health**



**Cardiovascular Health**



**Respiratory Support**



**Strategies for Wellness<sup>SM</sup>**

These statements have not been evaluated by the Food and Drug Administration. This product is not intended to diagnose, treat, cure or prevent any disease.

## INFLAMMATION RESPONSE

Our bodies have a wondrous, intricate system of defense known as the immune system. This wide-ranging network of interconnected cells and biochemical processes is amazingly sophisticated and capable of immediate and deep metabolic action. Because we face so many environmental toxins and dietary imbalances in our lives, the immune system is forced to go into overdrive protecting us. Once this occurs, our immune system can generate metabolic inflammation that may throw key systems into imbalance.

Inflammation is part of the body's innate healing process. Whenever the body is harmed, blood in the injured area releases inflammatory factors that call in the body's healing mechanisms. This action stimulates blood platelets to secrete glycoproteins on their cell membranes, causing them to aggregate and stick to one another, forming a mass. Fibrin, a protein, and fibronectin, a glycoprotein, cross link to form a matrix that traps proteins and particles to form a blood clot and prevent blood loss. This is the main structural support for the wound to heal.

After healing occurs, the body usually dispenses with the clot by dissolving it with systemic enzymes. This natural process is often blocked, however, by Plasminogen Activator Inhibitor type 1, or PAI-1, a natural clot builder that inhibits the enzymes and mechanisms that dissolve clots and keep the circulatory pathways clear. PAI-1 is often activated by many of the same triggers that set off metabolic inflammation; age, stress, increased visceral body fat, insulin inefficiency; triggers which can keep enzymes from doing their job. When PAI-1 is high, fibrinolytic activity hinders blood flow which can lead to blood that is thick, sticky, and slower to move due to the presence of fibrins in the blood. Proteolytic (protein digesting) enzymes can break down the protein matrix to dissolve and clear fibrin from the wound site.

Classic inflammation, described above, is a response to distinct, often disease-related stimuli. Metabolic inflammation produces similar results but has a different cause. It is the body's natural response to unnatural diets, lifestyles,

and environmental conditions. An overactive immune system and metabolic inflammation can set the stage for altered biochemistry and long term system imbalances later.

The proteolytic enzymes in REJUVENZYME aid in breaking down mucus, dissolving fibrin in the blood, and speeding tissue repair by thinning and clearing the bloodstream. Enzymes inhibit the release of bradykinins and similar compounds that are involved with mechanisms of discomfort. Serrapeptase supports fibrinolysis, is mucolytic and inhibits the release of bradykinins. Bromelain is a proteolytic enzyme extracted from pineapple stems. Its anti-inflammatory mechanism lies in its ability to selectively inhibit production of pro-inflammatory prostaglandin (PG-E2). This allows for positive, anti-inflammatory prostaglandin, like PG-E1, to have a greater balancing effect against discomfort in the body. Chymotrypsin supports healthy circulation.

REJUVENZYME contains ingredients which help the body support healthy inflammation response: Serrapeptase, Chymotrypsin, Bromelain, Pancreatin and Trypsin.

### Structure/Mobility Functions

REJUVENZYME can support joint flexibility, and healthy, beautiful skin. Specific proteases in the REJUVENZYME formula neutralize irritating biochemicals such as bradykinins and eicosanoids. The proteolytic enzymes pancreatin and bromelain complement the body's normal systems for synthesis, repair and regeneration of joint tissue. Amla, naturally high in vitamin C, has bioflavonoid constituents that help reduce cellular irritation and support normal joint, tendon and muscle function. Also, the vitamin C in amla is a necessary component of collagen synthesis, important for healthy skin. Papain is valued for its ability to aid in the repair of damaged tissue. Boron and magnesium, bundled into REJUVENZYME's ionic trace mineral blend, contribute to musculoskeletal health and strength. The body's mechanisms for maintaining tissues that have been subject to physical stress involve both catabolic and anabolic processes that are regulated by enzymes.

The following ingredients support structure/mobility and tissue regeneration: Amla, Bromelain, Pancreatin, Papain, Serrapeptase, Trypsin, Amylase, Chymotrypsin, Ionic Mineral Blend.

### Healthy Heart and Circulation

Proteolytic enzymes support normal cardiovascular health in multiple ways. Serrapeptase can act directly on arteries to support healthy blood flow by breaking down fibrin, a web-like filament mesh which may form in veins, arteries and blood vessels. Bromelain reduces the formation of thrombin, the enzyme that converts fibrinogen to fibrin. Bromelain also stimulates the formation of plasmin, another proteolytic enzyme that dissolves fibrin. Lipases, which are enzymes that hydrolyze lipids, play a role in digesting fat deposits within blood vessels. Rutin helps strengthen blood vessel structural integrity. The magnesium in the ionic mineral blend can help maintain normal heart rhythm.

The following ingredients support heart and circulation function: Bromelain, Lipase, Papain, Rutin, Serrapeptase and Ionic Mineral Blend.

### Respiratory and Immune System Support:

REJUVENZYME supports normal immune function by promoting the proper breakdown and recycling of proteins in the bloodstream. In addition, glycolytic (carbohydrate digesting) enzymes, also known as amylases, play a role in normal histamine release. Those who eat excessive simple carbohydrates tend to suffer from histamine-related health problems. This may be due to depletion of total amylase required to digest excess carbohydrates. Serrapeptase supports normal mucous membrane activity in the sinuses and respiratory tract by digesting the cross-linked matrix of proteins that form the support structure of mucus, thereby allowing for greater mucus clearing.

REJUVENZYME includes several ingredients which support immune and respiratory systems: Amylase, Bromelain, Chymotrypsin, Pancreatin, Trypsin, Serrapeptase.

### Antioxidant Defense

Every day the body is exposed to free radicals in the form of heavy metals, toxins, pesticides and food additives. Free radicals are reactive

molecules, atoms, or groups of atoms with an odd (unpaired) number of electrons. They steal electrons from neighboring molecules in order to achieve a balanced state. This process is called oxidation. Rampant cellular oxidation is believed by many scientists to be a primary cause of aging. Antioxidants, such as rutin, and the bioflavonoids and vitamin C found in amla, provide critical protection against oxidation.

The following ingredients support antioxidant defense: Amla, Rutin, Ionic Mineral Blend.

### Enteric Coating

Enteric coating helps the capsule reach the small intestine for protection and improved absorption instead of dissolving inside the acidic gastric environment of the stomach.

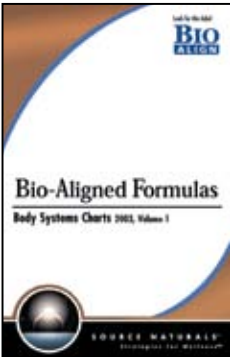
### Whole Body Systemic Enzymes

Source Naturals also offers VEGETARIAN REJUVENZYME™, for people who refrain from animal products. Our proprietary blend of vegetarian enzymes will cause less concern for those with allergies to animal based products. Also, the plant based ingredients work in a wide pH range and absorb easily into the blood stream, therefore eliminating enteric coating. As part of its line of Whole-Body™ Systemic Enzymes, Source Naturals also offers you: PANCREATIN POWER™, to support normal tissue regeneration functions, efficient circulation and healthy inflammatory response; NATTOKINASE, for healthy circulation and cardiovascular support; and SERRAPEPTASE for respiratory support and for the relief of minor pain from overexertion or from everyday activities. Bromelain is a proteolytic enzyme which works in a wide pH range and assists the body in times of physical stress.

Systemic enzymes are gaining well deserved recognition for their powerful ability to restore metabolic function by reaching deep into the root causes of systemic imbalance. Source Naturals is pleased to partner with your local natural foods retail outlet so that you may have the opportunity to take charge of your most precious asset, your health, through direct intervention with REJUVENZYME.

**REJUVENZYME™ BIO-ALIGNED FORMULA:  
WHOLE BODY™ SYSTEMIC ENZYMES**

<b>Heart &amp; Circulation</b>	Bromelain, Lipase, Papain, Rutin, Serrapeptase, Ionic Mineral Blend
<b>Respiratory System &amp; Mucous Membranes</b>	Serrapeptase
<b>Immunity</b>	Amylase, Bromelain, Chymotrypsin, Pancreatin, Trypsin
<b>Structure/Mobility: Joints &amp; Muscles</b>	Amla, Bromelain, Pancreatin, Serrapeptase, Trypsin, Ionic Mineral Blend
<b>Structure/Mobility: Tissue Regeneration</b>	Amla, Bromelain, Chymotrypsin, Papain, Trypsin
<b>Antioxidant Defense</b>	Amla, Rutin, Ionic Mineral Blend



**References:**

- Pejler G. et. al. Secretion of macrophage urokinase plasminogen activator is dependent on proteoglycans. *Eur J Biochem.* 2003 Oct; 270(19):3971-80.
- Waldo SW, et. al. Pancreatic digestive enzymes are potent generators of mediators for leukocyte activation and mortality. *Shock.* 2003 Aug; 20(2):138-43.
- Taussig SJ, Nieper HA. Bromelain: its use in prevention and treatment of cardiovascular disease, present status. *J IAPM* 1979;6: 139-151.
- Heinrich, J. et al. "Fibrinogen and factor VII in the prediction of coronary risk." *Arterioscler Thromb* 1994, 14:54-59.



*Strategies for Wellness™*

[www.sourcenaturals.com](http://www.sourcenaturals.com)

To learn more about Source Naturals Bio-Aligned Formulas™, visit our website, [www.sourcenaturals.com](http://www.sourcenaturals.com), or look for the Bio-Aligned Chart Book at participating health food stores.



These statements have not been evaluated by the Food and Drug Administration. This product is not intended to diagnose, treat, cure or prevent any disease.